

## 1 to 500 MHz

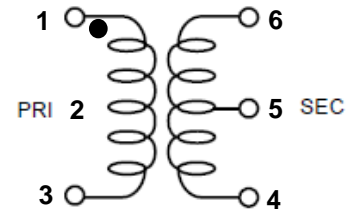
### Features

- Surface Mount
- 1:1 Impedance Ratio
- RoHS- compliant 1:1 transformer
- Low Cost
- Broadband

### Applications

- Impedance Matching
- Balanced Amplifier

### Functional Diagram



### Description

The PBI11A / PRWB75-1-1A is a RoHS compliant 1:1 RF flux coupled transformer in a low cost, surface mount packaging and broadband. The Applications include impedance matching and balanced amplifier. Also the PBI11A / PRWB75-1-1A is consist of single to differential mode. Transformer is surface mount packaging and is designed high temperature soldering reflow.

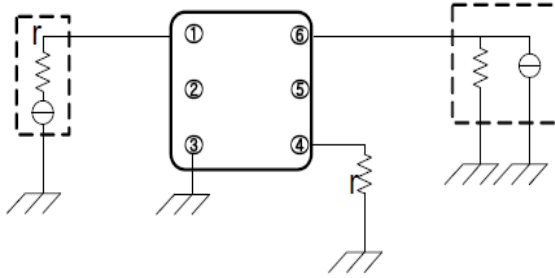
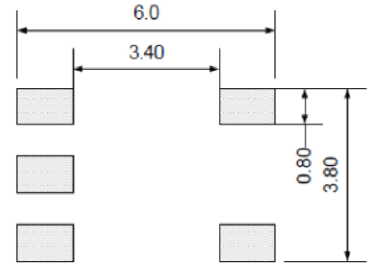
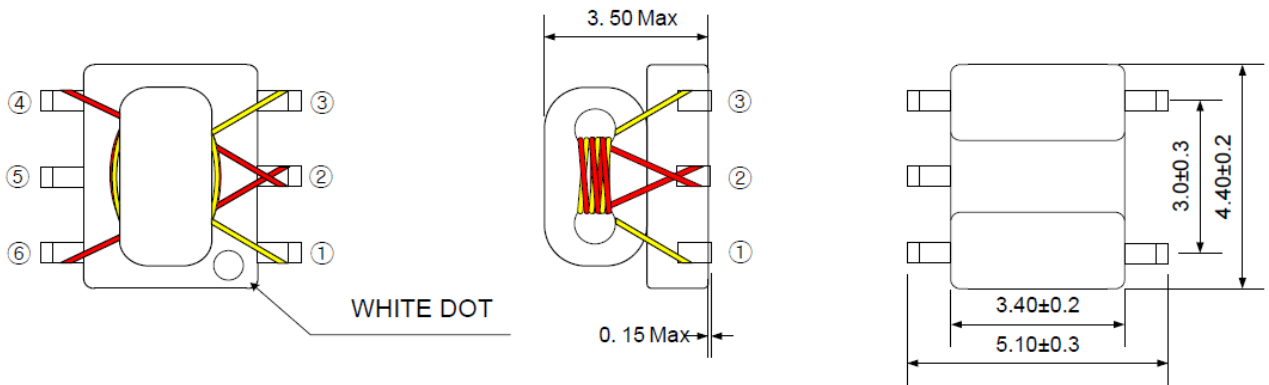
Function	Pin No.	Function	Pin No.
Primary Dot	1	Secondary	4
Secondary CT	2	Not Used	5
Primary	3	Secondary Dot	6

### Absolute Maximum Ratings

Parameter	Rating
RF Power	500 mW
DC Current	30mA
Operating Temperature	-40°C to 85°C
Storage Temperature	-55 to +125

### Electric Characteristic

Parameter	Unit	Frequency(MHz)	Typ.
Frequency	MHz	1 ~ 500	
Insertion Loss	dB	1 ~ 5	1.6
		5 ~ 250	2.0
		250 ~ 500	2.6
Amplitude Unbalance	dB	1 ~ 5	0.1
		5 ~ 250	0.6
		250 ~ 500	4
Phase Unbalance	dB	1 ~ 5	0.1
		5 ~ 250	1.6
		250 ~ 500	0.6

**Test Circuit**

**PCB Footprint (mm)**

**Outline Drawing (mm)**

**Packing Unit**

ITEM	Reel Packing (Q'ty / Reel)	Outbox (Q'ty/Cartoon)
SMD Balun	1,000 pcs	4,000 pcs

**Reel Tape Dimension**
