

XGT-200 10Gbit Ethernet Tester

Complete Test Solution for Next Generation Ethernet

Features

- ◆ Smart and durable, field application ready
- ◆ HD color touch screen, sun readable
- ◆ User-friendly user interface
- ◆ PC remote control
- ◆ Test profiles and data management, USB/FTP transfer
- ◆ Lithium battery up to 4 hours continuous testing

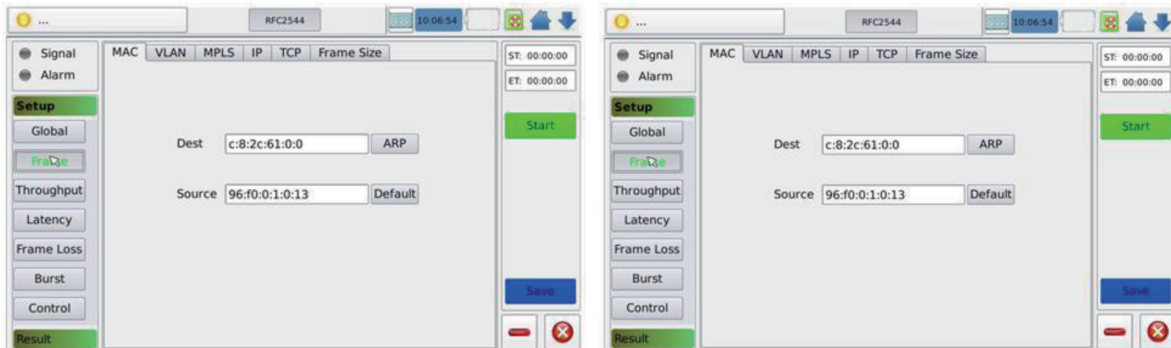
Key Functions:

- ◆ 10GE SFP+ x2, 10/100/1000BASE-T RJ45 x2, 100/1000BASE-X SFP x2
- ◆ 10M~10Gb/s bandwidth, LAN and WAN mode
- ◆ RFC2544 and Y.1564 test
- ◆ Layer 1/2/3/4 BERT test
- ◆ Multi-stream traffic generation and analysis
- ◆ Packet capture
- ◆ VLAN and VLAN Q-in-Q test

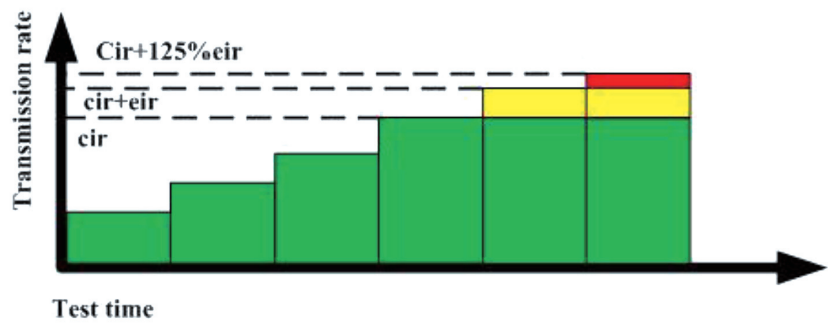


- ◆ MPLS test with multiple MPLS tags
- ◆ ODT test
- ◆ CoS and ToS/DSCP priority testing
- ◆ Statistical analysis report
- ◆ Ethernet and advanced IP connectivity test
- ◆ Intelligent detection and remote control loopback test

RFC2544



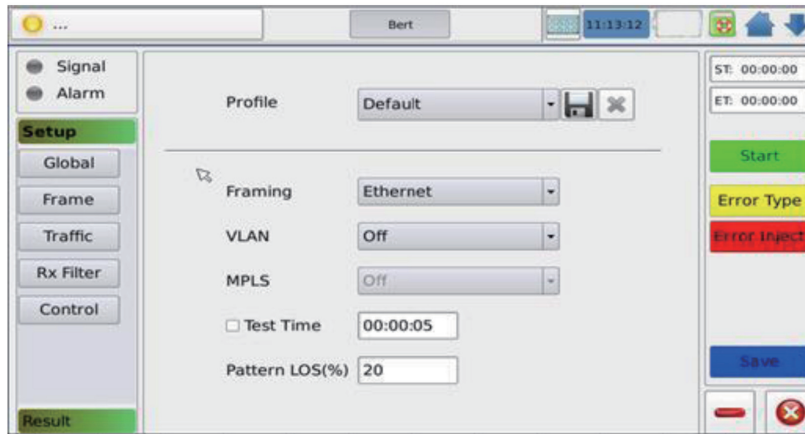
ITU-T Y.1564 Service Configuration Test



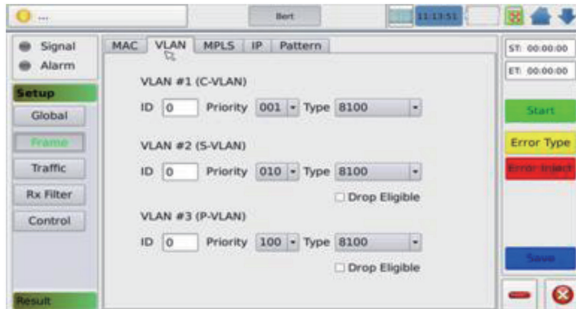
Service Performance Test



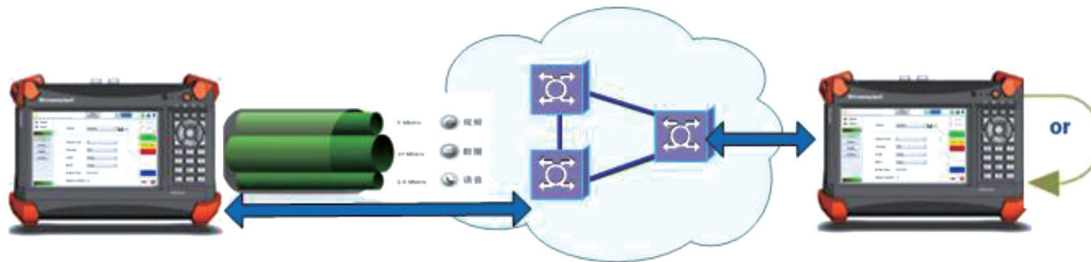
BERT



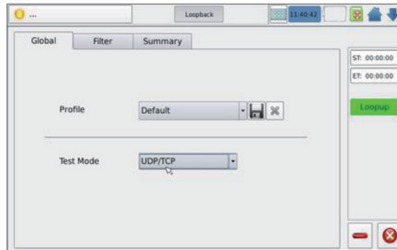
Q-IN-Q



Multiple Stream Generation & Analysis



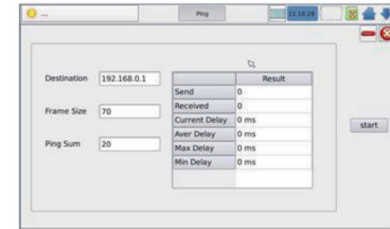
Layer 1-4 Loopback



Pass-through



IP tool



Specifications

OPTICAL INTERFACE

Available wavelengths (nm)

Two ports: 100M and GigE (850, 1310 & 1550)

Interface	Two ports: 100M and GigE (850, 1310 & 1550)						
	100 Base-FX	100 Base-LX	1000 Base-SX	1000 Base-LX	1000 Base-ZX	1000 Base-BX10-D	1000 Base-BX10-U
Wavelength (nm)	1310	1310	850	1310	1550	Tx: 1490Rx: 1310	Tx: 1310Rx: 1490
Tx level (dBm)	-20~-15	-15~-8	-9~-3	-9.5~-3	0~5	-9.5~-3	-9.5~-3
Rx level sensitivity (dBm)	-31	-28	-20	-22	-22	-20	-20
Maximum reach	2Km	15Km	550m	10Km	80Km	10Km	10Km
transmission bit rate (Gbit/s)	0.125	0.125	0.125	0.125	0.125	0.125	0.125
Reception bit rate (Gbit/s)	0.125	0.125	0.125	0.125	0.125	0.125	0.125
Tx operational wavelength range (nm)	1280-1380	1261-1360	830-860	1270-1360	1540-1570	1480-1550	1260-1360

Measurement

Frequency (ppm)	±4.6	±4.6	±4.6	±4.6	±4.6	±15	±15
Optical power (dB)	±2	±2	±2	±2	±2	±2	±2
Maximum Rx before damage (dBm)	3	3	6	6	6	6	6
Connector	LC	LC	LC	LC	LC	LC	LC
Transceiver type	SFP	SFP	SFP	SFP	SFP	SFP	SFP

SFP+ (10G)

Interface	10G Base-SR/SW	10G Base-LR/LW	10G Base-ER/EW
Wavelength (nm)	850	1310	1550
Tx level (dBm)	-5to-1	-8 to 0.5	-4.7 to 4.0
Rx level sensitivity (dBm)	-11.1	-12.6	-14.1
Maximum reach	300m	10Km	40Km
Tx bit rate (Gbit/s)	9.95 to 10.03	9.95 to 10.03	9.95 to 10.03
Rx bit rate (Gbit/s)	9.95 to 10.03	9.95 to 10.03	9.95 to 10.03
Tx operation wavelength range (nm)	840 to 860	1260 to 1355	1530 to 1565

Measurement Accuracy

Frequency (ppm)	±4.6	±4.6	±4.6
Maximum rx before (dBm)	6	5	5
Connector	LC	LC	LC
Transceiver type	SFP+	SFP+	SFP+

RJ45

Interface	Two ports: 10/100 Base-T half/full duplex, 1000 Base-T full duplex automatic or manual detection of straight/crossover cable		
	10 Base-T	100 Base-T	1000 Base-T
Tx bit rate	10 Mbit/s	125 Mbit/s	1 Gbit/s
Tx accuracy (ppm)	±4.6	±4.6	±4.6
Duplex mode	Half and full duplex	Half and full duplex	full duplex
Connector	RJ-45	RJ-45	RJ-45
Maximum (m)	100	100	100

General Specifications

Screen	7 inch color LED touch screen (resolution 960*480)
Data storage	SD card(8G)
interface	USB, RJ45
Battery	lithium battery(4400mAh)
Battery life	4h
Operating temperature	-10 ~ +50°C
Storage temperature	-10 ~ +70°C
Operating humidity	10% ~ 90%
Storage humidity	5% ~ 95%
Size	282x186x75mm
Weight	2.9Kg